

## \$359,900 - 1705 10238 103 Street, Edmonton

MLS® #E4426669

**\$359,900**

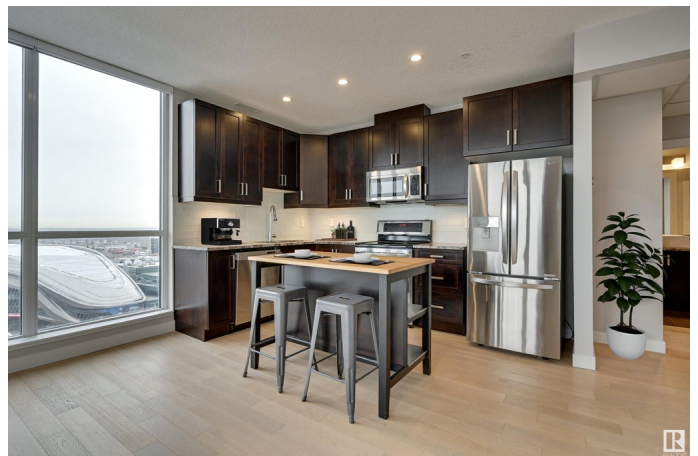
2 Bedroom, 2.00 Bathroom, 761 sqft

Condo / Townhouse on 0.00 Acres

Downtown (Edmonton), Edmonton, AB

**CORNER UNIT | PANORAMIC, EXPANSIVE VIEWS | PRIVATE PATIO IN THE ICE DISTRICT! 2 BED, 2 BATH CONDO.**

Welcome to The Ultima Tower, where luxury meets urban living in the heart of Edmontonâ€™s Ice District! This 2-bedroom, 2-bathroom condo offers a west-facing private patio with stunning views of downtown and the river valley. The open-concept floor plan features a modern kitchen with sleek cabinetry, granite countertops, stainless steel appliances, and an islandâ€”perfect for entertaining. The primary suite includes a closet with built-ins and a private 3-piece ensuite, while the second bedroom is conveniently located next to the 4-piece main bathroom. Upgraded hardwood flooring and tile flooring throughout, plus in-suite laundry for added convenience. The Ultima offers exceptional amenities including a 10th-floor social lounge, fitness centre, and an outdoor patio with a hot tub. Live steps from Rogers Place, 104th Street, the best restaurants, cafÃ©s, shopping, and Edmontonâ€™s thriving downtown scene.



Built in 2016

### Essential Information

MLS® # E4426669

Price \$359,900

Bedrooms	2
Bathrooms	2.00
Full Baths	2
Square Footage	761
Acres	0.00
Year Built	2016
Type	Condo / Townhouse
Sub-Type	Apartment High Rise
Style	Single Level Apartment
Status	Active

### Community Information

Address	1705 10238 103 Street
Area	Edmonton
Subdivision	Downtown (Edmonton)
City	Edmonton
County	ALBERTA
Province	AB
Postal Code	T5J 0G6

### Amenities

Amenities	Exercise Room, Hot Tub, Concierge Service, Rooftop Deck/Patio
Parking Spaces	1
Parking	Stall, Underground

### Interior

Interior Features	ensuite bathroom
Appliances	Dishwasher-Built-In, Dryer, Hood Fan, Refrigerator, Stove-Electric, Washer
Heating	Forced Air-1, Natural Gas
# of Stories	31
Stories	1
Has Basement	Yes
Basement	None, No Basement

### Exterior

Exterior	Concrete, Brick, Metal
Exterior Features	Golf Nearby, Public Transportation, Shopping Nearby, View Downtown
Roof	Flat

Construction	Concrete, Brick, Metal
Foundation	Concrete Perimeter

**Additional Information**

Date Listed	March 20th, 2025
Days on Market	43
Zoning	Zone 12
Condo Fee	\$537

DATA IS DEEMED RELIABLE BUT IS NOT GUARANTEED ACCURATE BY THE REALTORS® ASSOCIATION OF EDMONTON. COPYRIGHT 2025 BY THE REALTORS® ASSOCIATION OF EDMONTON. ALL RIGHTS RESERVED.Trademarks are owned or controlled by the Canadian Real Estate Association (CREA) and identify real estate professionals who are members of CREA (REALTOR®, REALTORS®) and/or the quality of services they provide (MLS®, Multiple Listing Service®)

Listing information last updated on May 2nd, 2025 at 4:17pm MDT