

Courtesy Of Ricky Singh Of MaxWell Polaris

\$485,000 - 7932 14 Ave, Edmonton

MLS® #E4431389

\$485,000

3 Bedroom, 3.50 Bathroom, 1,389 sqft

Single Family on 0.00 Acres

Summerside, Edmonton, AB

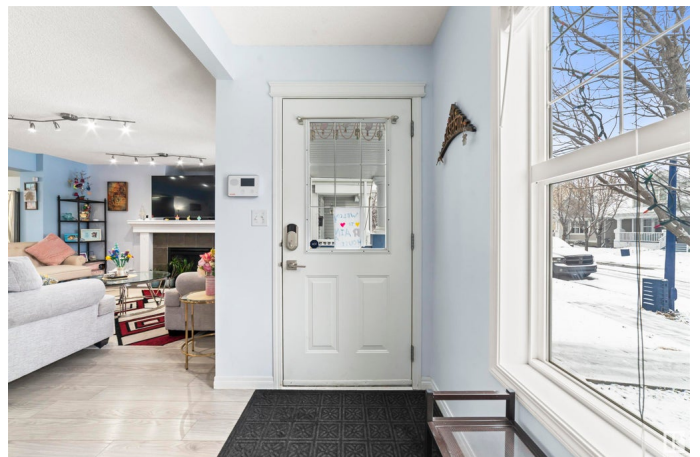
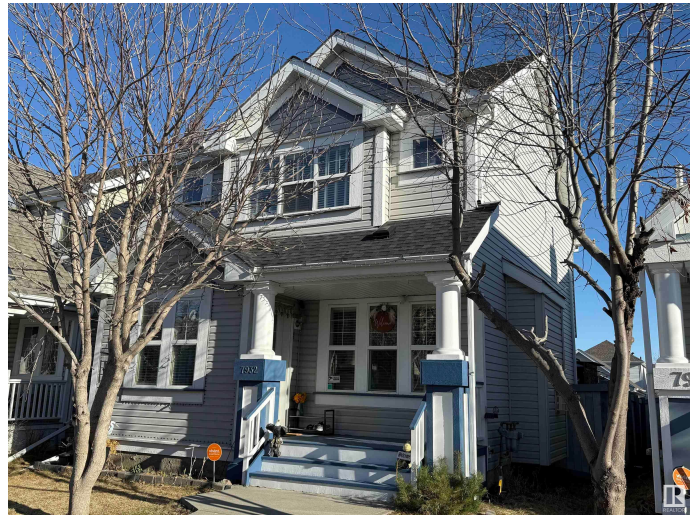
Welcome to this beautiful home in the Summerside community, offering exclusive lake access with over 2000 sqft of living space. As you enter, you'll be greeted by a spacious living area with a cozy fireplace with recently updated kitchen with island & a half washroom. Upstairs, you'll find a primary bedroom with custom made feature wall complete with an ensuite bathroom and a walk-in closet. Two additional bedrooms and another full bathroom. The basement is fully finished with huge Rec room & full washroom, laundry & storage. Recent upgrades include Shingles (2023), All appliances (2024), kitchen (2023), Washrooms (2023), Paint (2023). Backyard has a huge deck with Pergola. It has detached double car garage, adding both convenience and charm to this exceptional home with fully landscaped & fully fenced. Perfect for families or entertaining -Prime Location -Steps from parks, schools, and amenities -Exclusive Summerside Lake Access -Enjoy year-round activities. **MUST SEE!!**

Built in 2005

Essential Information

MLS® # E4431389

Price \$485,000



Bedrooms	3
Bathrooms	3.50
Full Baths	3
Half Baths	1
Square Footage	1,389
Acres	0.00
Year Built	2005
Type	Single Family
Sub-Type	Detached Single Family
Style	2 Storey
Status	Active

Community Information

Address	7932 14 Ave
Area	Edmonton
Subdivision	Summerside
City	Edmonton
County	ALBERTA
Province	AB
Postal Code	T6X 1H3

Amenities

Amenities	On Street Parking, Carbon Monoxide Detectors, Deck, Detectors Smoke, No Animal Home, No Smoking Home
Parking	Double Garage Detached

Interior

Interior Features	ensuite bathroom
Appliances	Dishwasher-Built-In, Dryer, Garage Control, Garage Opener, Microwave Hood Fan, Refrigerator, Stove-Electric, Vacuum Systems, Washer, Window Coverings, TV Wall Mount
Heating	Forced Air-1, Natural Gas
Fireplace	Yes
Fireplaces	Mantel
Stories	3
Has Basement	Yes
Basement	Full, Finished

Exterior

Exterior	Wood, Vinyl
Exterior Features	Airport Nearby, Back Lane, Fenced, Lake Access Property, Landscaped, Playground Nearby, Schools, Shopping Nearby
Roof	Asphalt Shingles
Construction	Wood, Vinyl
Foundation	Concrete Perimeter

School Information

Elementary	MICHAEL STREMBITSKY
Middle	FATHER MICHAEL MIREAU
High	J PERCY

Additional Information

Date Listed	April 17th, 2025
Days on Market	14
Zoning	Zone 53
HOA Fees	453.02
HOA Fees Freq.	Annually

DATA IS DEEMED RELIABLE BUT IS NOT GUARANTEED ACCURATE BY THE REALTORS® ASSOCIATION OF EDMONTON. COPYRIGHT 2025 BY THE REALTORS® ASSOCIATION OF EDMONTON. ALL RIGHTS RESERVED. Trademarks are owned or controlled by the Canadian Real Estate Association (CREA) and identify real estate professionals who are members of CREA (REALTOR®, REALTORS®) and/or the quality of services they provide (MLS®, Multiple Listing Service®)

Listing information last updated on May 1st, 2025 at 6:47pm MDT