

\$255,000 - 504 10235 112 Street, Edmonton

MLS® #E4432964

\$255,000

2 Bedroom, 2.00 Bathroom, 932 sqft

Condo / Townhouse on 0.00 Acres

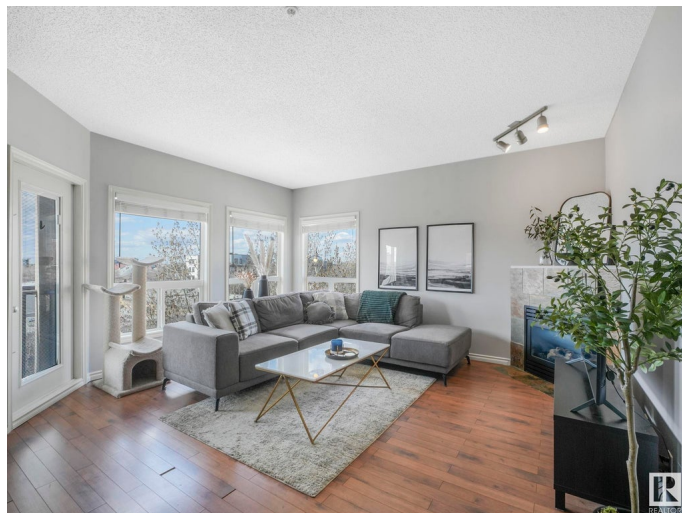
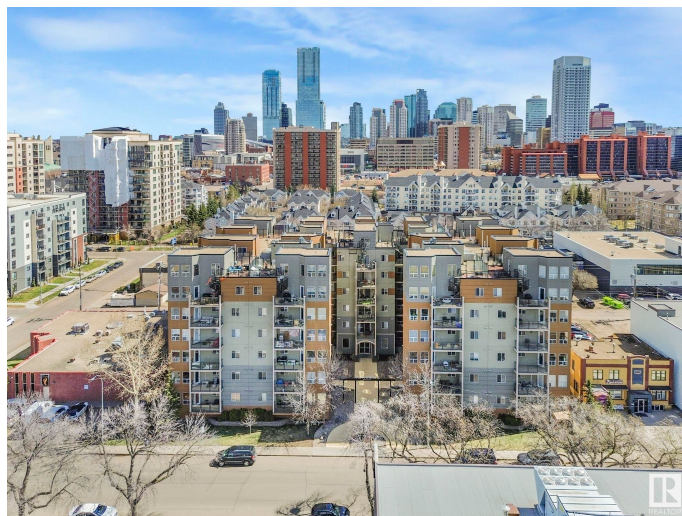
Wâ@hkwÃªntÃ´win, Edmonton, AB

Welcome to The Imperial, a pet-friendly condo in the heart of vibrant Wâ@hkwÃªntÃ´win (formerly Oliver)! This stylish 2 bed, 2 bath corner unit offers an open floor plan, ideal for entertaining. The bright living room features large west-facing windows & access to a spacious balcony w/ gas BBQ hookup & sunset views. The open kitchen has stainless steel appliances (new in 2022) & lets you cook while catching up with guests or watching the Oilers game. The primary bedroom is generously sized, w/ a walk-through closet leading to a 4-piece ensuite accented by slate tile surround. The second bed is across the unit for added privacy & next to the second full bath. Enjoy heated floors, in-suite laundry, A/C installed in 2021, painted (2021), and a heated underground parking stall. Walk to MacEwan University, shopping, restaurants, the Brewery & Ice District, the river valley & public transit + quick access to U of A & downtown!

Built in 2007

Essential Information

MLS® #	E4432964
Price	\$255,000
Bedrooms	2
Bathrooms	2.00
Full Baths	2



Square Footage	932
Acres	0.00
Year Built	2007
Type	Condo / Townhouse
Sub-Type	Lowrise Apartment
Style	Single Level Apartment
Status	Active

Community Information

Address	504 10235 112 Street
Area	Edmonton
Subdivision	WÃ©hkwÃ©ntÃ©win
City	Edmonton
County	ALBERTA
Province	AB
Postal Code	T5K 1M7

Amenities

Amenities	Air Conditioner, Ceiling 9 ft., Parking-Visitor, Patio, Secured Parking, Security Door, Sprinkler System-Fire, Storage-In-Suite, See Remarks
Parking Spaces	1
Parking	Underground

Interior

Interior Features	ensuite bathroom
Appliances	Air Conditioning-Central, Dishwasher-Built-In, Microwave Hood Fan, Refrigerator, Stacked Washer/Dryer, Stove-Electric, Window Coverings
Heating	In Floor Heat System, Natural Gas
Fireplace	Yes
Fireplaces	Glass Door
# of Stories	6
Stories	1
Has Basement	Yes
Basement	None, No Basement

Exterior

Exterior	Concrete, Stucco
Exterior Features	Playground Nearby, Public Swimming Pool, Public Transportation, Schools, Shopping Nearby, View City, See Remarks

Roof	Tar & Gravel
Construction	Concrete, Stucco
Foundation	Concrete Perimeter

School Information

Elementary	Wihkwāntāwin School K-6
Middle	Westminster School 7-9
High	Victoria School 10-12

Additional Information

Date Listed	April 25th, 2025
Days on Market	6
Zoning	Zone 12
Condo Fee	\$638

DATA IS DEEMED RELIABLE BUT IS NOT GUARANTEED ACCURATE BY THE REALTORS® ASSOCIATION OF EDMONTON. COPYRIGHT 2025 BY THE REALTORS® ASSOCIATION OF EDMONTON. ALL RIGHTS RESERVED.Trademarks are owned or controlled by the Canadian Real Estate Association (CREA) and identify real estate professionals who are members of CREA (REALTOR®, REALTORS®) and/or the quality of services they provide (MLS®, Multiple Listing Service®)

Listing information last updated on May 1st, 2025 at 1:47pm MDT