

## \$1,425 - 312 111 Watt Common, Edmonton

MLS® #E4433726

**\$1,425**

2 Bedroom, 0.50 Bathroom, 614 sqft

Rental on 0.00 Acres

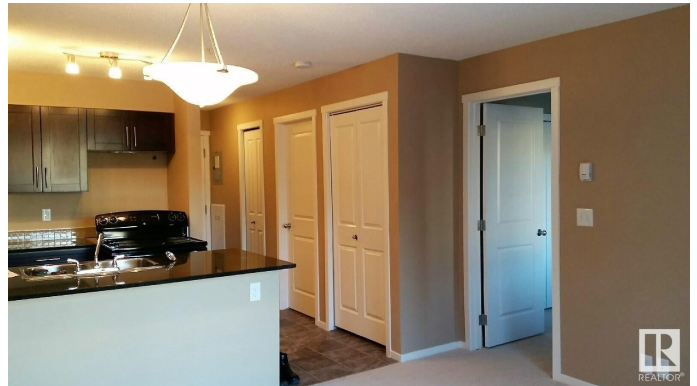
Walker, Edmonton, AB

Welcome to your 1 bed + den & 1 bathroom apartment located in the south neighborhood of Walker. The kitchen has black appliances including a dishwasher. The living room has access to your balcony where you can enjoy some fresh air or your morning coffee as the weather gets warmer. The primary bedroom has a great sized closet. There is a washer and dryer in the unit so you donâ€™t have to worry about using shared laundry. This unit comes with one heated, underground parking stall. It is located in Walker Lakes giving you easy access to the Anthony Henday and is super close to shopping (including Walmart), restaurants, coffee shops, and so much more!

Sorry, no smoking and no pets. Heat and water is included, you are responsible for electricity and internet & cable. Tenant insurance is mandatory.

### Essential Information

MLS® #	E4433726
Price	\$1,425
Bedrooms	2
Bathrooms	0.50
Half Baths	1
Square Footage	614
Acres	0.00
Type	Rental



Style	Single Level Apartment
Status	Active

### Community Information

Address	312 111 Watt Common
Area	Edmonton
Subdivision	Walker
City	Edmonton
County	ALBERTA
Province	AB
Postal Code	T6X 2C6

### Amenities

Parking	Underground
---------	-------------

### Interior

Appliances	Dishwasher-Built-In, Dryer, Refrigerator, Stove-Electric, Washer
------------	--

### Additional Information

Date Listed	May 1st, 2025
Days on Market	12
Zoning	Zone 53

DATA IS DEEMED RELIABLE BUT IS NOT GUARANTEED ACCURATE BY THE REALTORS® ASSOCIATION OF EDMONTON. COPYRIGHT 2025 BY THE REALTORS® ASSOCIATION OF EDMONTON. ALL RIGHTS RESERVED. Trademarks are owned or controlled by the Canadian Real Estate Association (CREA) and identify real estate professionals who are members of CREA (REALTOR®, REALTORS®) and/or the quality of services they provide (MLS®, Multiple Listing Service®)

Listing information last updated on May 13th, 2025 at 3:02pm MDT