

\$0 - N/A, Edmonton

MLS® #E4434571

\$0

0 Bedroom, 0.00 Bathroom,
Retail on 0.00 Acres

Strathcona, Edmonton, AB

Prime 2,610 +- sq. ft. retail/commercial space available for lease in the heart of Whyte Avenue, one of Edmonton’s most iconic and high-traffic destinations. Surrounded by popular restaurants, bars, boutiques, and cafes, this location offers excellent visibility, strong foot traffic, and premium signage opportunities. Ideal for retail, service, or hospitality uses and immediate possession.

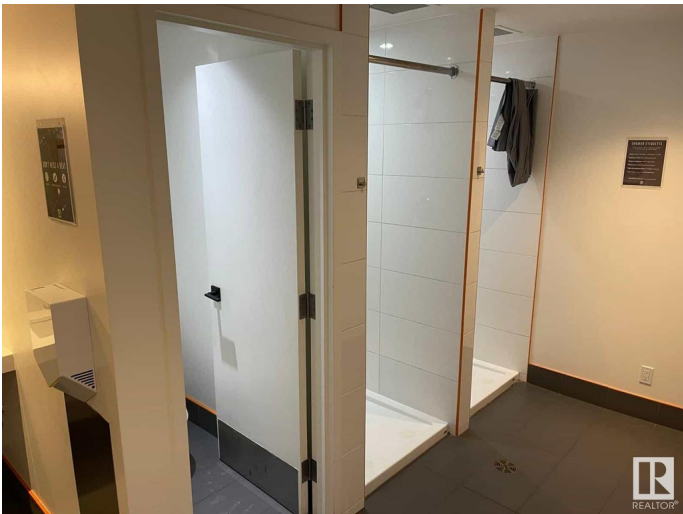
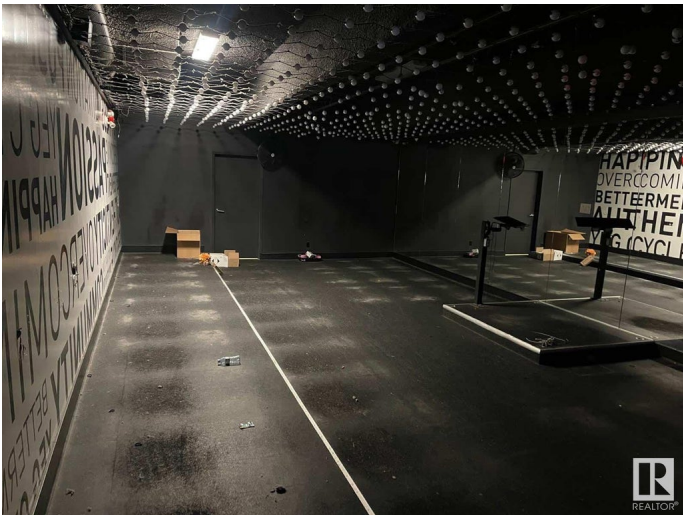
Built in 1970

Essential Information

MLS® #	E4434571
Bathrooms	0.00
Acres	0.00
Year Built	1970
Type	Retail
Status	Active

Community Information

Address	N/A
Area	Edmonton
Subdivision	Strathcona
City	Edmonton
County	ALBERTA
Province	AB
Postal Code	T6E 2A7



Exterior

Exterior	Concrete
Construction	Concrete

Additional Information

Date Listed	May 5th, 2025
Days on Market	7
Zoning	Zone 15

DATA IS DEEMED RELIABLE BUT IS NOT GUARANTEED ACCURATE BY THE REALTORS® ASSOCIATION OF EDMONTON. COPYRIGHT 2025 BY THE REALTORS® ASSOCIATION OF EDMONTON. ALL RIGHTS RESERVED.Trademarks are owned or controlled by the Canadian Real Estate Association (CREA) and identify real estate professionals who are members of CREA (REALTOR®, REALTORS®) and/or the quality of services they provide (MLS®, Multiple Listing Service®)

Listing information last updated on May 12th, 2025 at 12:02pm MDT