

\$998,800 - 1429 Herring-cooper Way, Edmonton

MLS® #E4435435

\$998,800

5 Bedroom, 3.50 Bathroom, 3,257 sqft

Single Family on 0.00 Acres

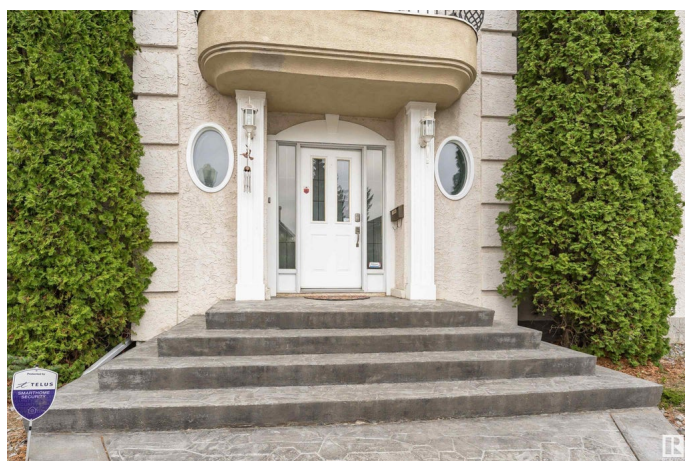
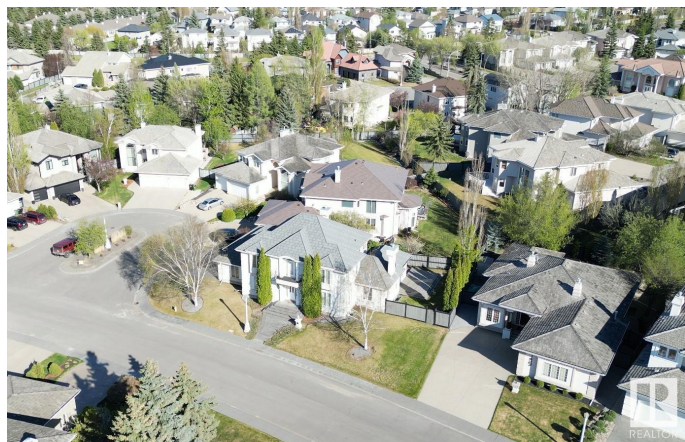
Henderson Estates, Edmonton, AB

This exquisite 4 bedroom, former Gable Showhome boasts stunning French Provincial decor, offering a perfect blend of elegance & comfort. The exquisite spiral staircase exudes architectural style when you enter the foyer. A formal living room & dining room, plus office, & family room make this a desirable traditional layout, rarely found in some of today's homes. The spacious kitchen & family room with fireplace make the heart of the home warm & welcoming. Plus a main floor bonus room off the kitchen offers lots of options to function as whatever your heart desires. The upper floor has 4 large bedrooms, plus a beautiful library with front facing balcony. A fully finished basement adds lots of space for extra enjoyment, games, plus a huge storage room. Notable features: Metal tile roof, Central AC, Newer Hi-Eff furnace & Air Exchanger, Newer HW tank, Central Vac, Speaker system. Fridge & Dishwasher newer.

Built in 1996

Essential Information

MLS® #	E4435435
Price	\$998,800
Bedrooms	5
Bathrooms	3.50
Full Baths	3



Half Baths	1
Square Footage	3,257
Acres	0.00
Year Built	1996
Type	Single Family
Sub-Type	Detached Single Family
Style	2 Storey
Status	Active

Community Information

Address	1429 Herring-cooper Way
Area	Edmonton
Subdivision	Henderson Estates
City	Edmonton
County	ALBERTA
Province	AB
Postal Code	T6R 2L9

Amenities

Amenities	Air Conditioner, Deck, Hot Tub
Parking Spaces	6
Parking	Insulated, Triple Garage Attached

Interior

Interior Features	ensuite bathroom
Appliances	Air Conditioning-Central, Dishwasher-Built-In, Dryer, Garage Control, Garage Opener, Garburator, Hood Fan, Refrigerator, Storage Shed, Stove-Gas, Vacuum System Attachments, Vacuum Systems, Washer, Window Coverings, Hot Tub
Heating	Forced Air-1, In Floor Heat System, Natural Gas
Fireplace	Yes
Fireplaces	Glass Door, Mantel, Masonry
Stories	3
Has Basement	Yes
Basement	Full, Finished

Exterior

Exterior	Wood, Stucco
Exterior Features	Fenced, Landscaped, No Back Lane, Playground Nearby, Schools,

Shopping Nearby, See Remarks

Roof	Metal
Construction	Wood, Stucco
Foundation	Concrete Perimeter

School Information

Elementary	Earl Buxton, St. Mary's
Middle	Brander Gardens
High	Lillian Osborne

Additional Information

Date Listed	May 9th, 2025
Days on Market	3
Zoning	Zone 14
HOA Fees	250
HOA Fees Freq.	Annually

DATA IS DEEMED RELIABLE BUT IS NOT GUARANTEED ACCURATE BY THE REALTORS® ASSOCIATION OF EDMONTON. COPYRIGHT 2025 BY THE REALTORS® ASSOCIATION OF EDMONTON. ALL RIGHTS RESERVED. Trademarks are owned or controlled by the Canadian Real Estate Association (CREA) and identify real estate professionals who are members of CREA (REALTOR®, REALTORS®) and/or the quality of services they provide (MLS®, Multiple Listing Service®)

Listing information last updated on May 12th, 2025 at 10:17am MDT