

\$285,000 - 55213 Rge Road 234, Rural Sturgeon County

MLS® #E4440147

\$285,000

0 Bedroom, 0.00 Bathroom,
Rural on 2.99 Acres

None, Rural Sturgeon County, AB

Discover your dream home on a peaceful, fully fenced 2.99-acre property—just 10 minutes from North Edmonton and Anthony Henday Drive. This serene oasis offers the perfect balance of quiet country living with the convenience of nearby city amenities. Enjoy space, privacy, and accessibility all in one exceptional location.

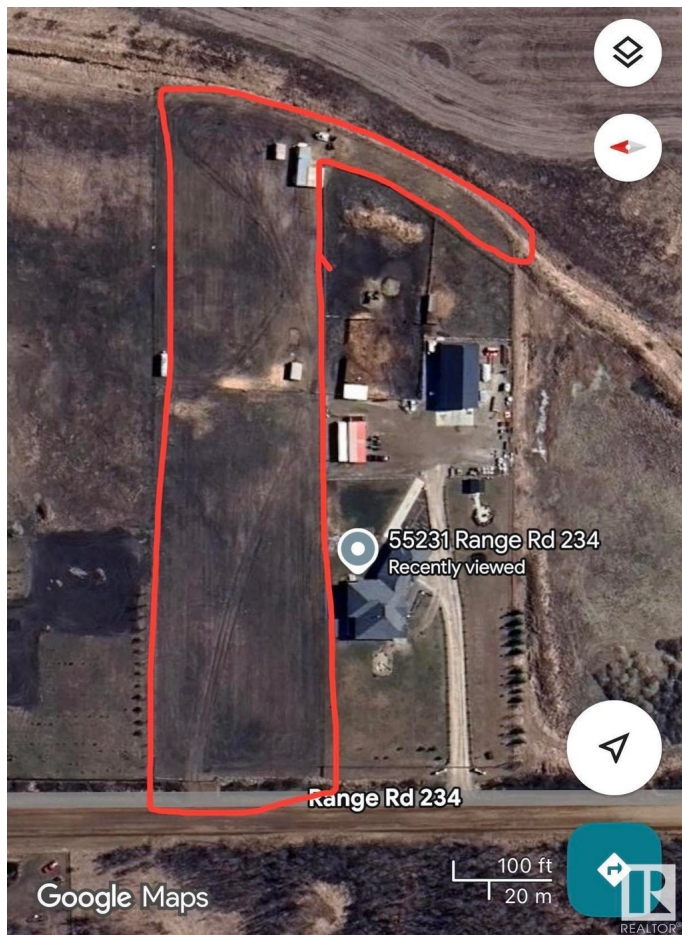
Essential Information

MLS® #	E4440147
Price	\$285,000
Bathrooms	0.00
Acres	2.99
Type	Rural
Sub-Type	Vacant Lot/Land
Status	Active

Community Information

Address	55213 Rge Road 234
Area	Rural Sturgeon County
Subdivision	None
City	Rural Sturgeon County
County	ALBERTA
Province	AB
Postal Code	T0A 1N0

Exterior



Exterior Features Fenced, Flat Site, See Remarks

Additional Information

Date Listed June 3rd, 2025
Days on Market 52
Zoning Zone 70

DATA IS DEEMED RELIABLE BUT IS NOT GUARANTEED ACCURATE BY THE REALTORS® ASSOCIATION OF EDMONTON. COPYRIGHT 2025 BY THE REALTORS® ASSOCIATION OF EDMONTON. ALL RIGHTS RESERVED.Trademarks are owned or controlled by the Canadian Real Estate Association (CREA) and identify real estate professionals who are members of CREA (REALTOR®, REALTORS®) and/or the quality of services they provide (MLS®, Multiple Listing Service®)
Listing information last updated on July 25th, 2025 at 8:03am MDT