

# \$166,900 - 1609 10140 120 Street, Edmonton

MLS® #E4441907

**\$166,900**

2 Bedroom, 1.50 Bathroom, 926 sqft

Condo / Townhouse on 0.00 Acres

WÃ@hkwÃªntÃ´win, Edmonton, AB

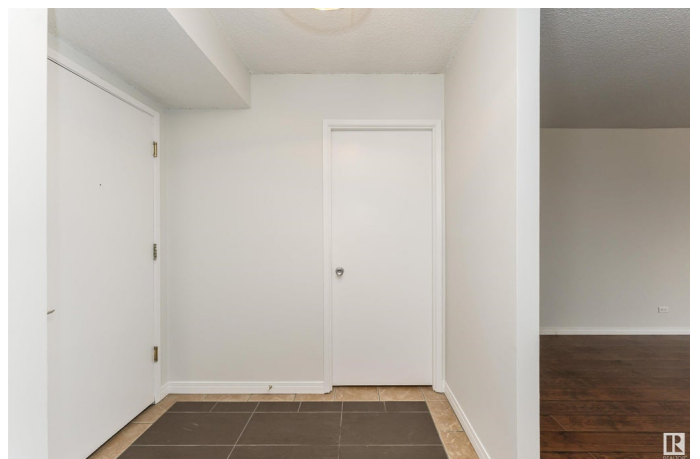
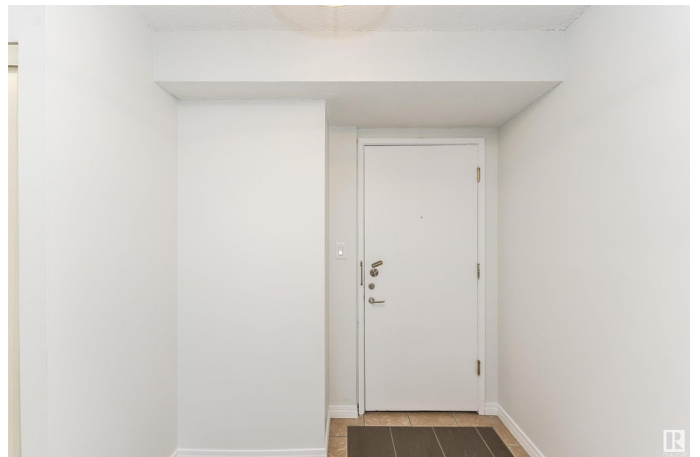
Stunning newly renovated penthouse in Glenora Manor, features 2 bedrooms and 1.5 bathrooms. This 926 sqft condo is located on the 16th floor and offers breathtaking city views. The interior boasts fresh paint, stainless steel appliances, commercial-grade lighting, upgraded hardware, ceramic tile and hardwood floor throughout. With a northeast exposure, the unit includes a massive 140 sqft private balcony, spacious bedrooms, and ample in-suite storage. For your convenience, laundry facilities are located on the same floor, and the unit is equipped with central air conditioning. Building amenities enhance the living experience with an outdoor pool, saunas, social/fitness room, secure underground parking (#73), and an on-site manager. The building is also served by 3 elevators. The condo fee covers all utilities. Recent upgrades to the building include new windows and patio doors. This exceptional location, just steps away from Jasper Ave, River Valley, 124 ST Market and Brewery District.

Built in 1969

## Essential Information

MLS® # E4441907

Price \$166,900



|                |                        |
|----------------|------------------------|
| Bedrooms       | 2                      |
| Bathrooms      | 1.50                   |
| Full Baths     | 1                      |
| Half Baths     | 1                      |
| Square Footage | 926                    |
| Acres          | 0.00                   |
| Year Built     | 1969                   |
| Type           | Condo / Townhouse      |
| Sub-Type       | Apartment High Rise    |
| Style          | Single Level Apartment |
| Status         | Active                 |

### Community Information

|             |                       |
|-------------|-----------------------|
| Address     | 1609 10140 120 Street |
| Area        | Edmonton              |
| Subdivision | W&hkw&nt&win          |
| City        | Edmonton              |
| County      | ALBERTA               |
| Province    | AB                    |
| Postal Code | T5X 1Z8               |

### Amenities

|           |   |
|-----------|---|
| Amenities | Air Conditioner, Exercise Room, No Smoking Home, Parking-Plug-Ins, Party Room, Patio, Pool-Outdoor, Recreation Room/Centre, Sauna; Swirlpool; Steam, Secured Parking, Security Door, Social Rooms |
| Parking   | Underground   |
| Has Pool  | Yes   |

### Interior

|                   |  |
|-------------------|--|
| Interior Features | ensuite bathroom   |
| Appliances        | Dishwasher-Built-In, Oven-Microwave, Refrigerator, Stove-Countertop Electric |
| Heating           | Baseboard, Hot Water, Natural Gas  |
| # of Stories      | 16   |
| Stories           | 1  |
| Has Basement      | Yes  |
| Basement          | None, No Basement  |

### Exterior

|                   |  |
|-------------------|--|
| Exterior          | Concrete, Stucco   |
| Exterior Features | Golf Nearby, Playground Nearby, Public Swimming Pool, Public Transportation, Shopping Nearby, View City, View Downtown |
| Roof              | Tar & Gravel   |
| Construction      | Concrete, Stucco   |
| Foundation        | Concrete Perimeter   |

### **Additional Information**

|                |                 |
|----------------|-----------------|
| Date Listed    | June 12th, 2025 |
| Days on Market | 4               |
| Zoning         | Zone 12         |
| Condo Fee      | \$792           |

DATA IS DEEMED RELIABLE BUT IS NOT GUARANTEED ACCURATE BY THE REALTORS® ASSOCIATION OF EDMONTON. COPYRIGHT 2025 BY THE REALTORS® ASSOCIATION OF EDMONTON. ALL RIGHTS RESERVED. Trademarks are owned or controlled by the Canadian Real Estate Association (CREA) and identify real estate professionals who are members of CREA (REALTOR®, REALTORS®) and/or the quality of services they provide (MLS®, Multiple Listing Service®)

Listing information last updated on June 16th, 2025 at 11:47am MDT