

\$672,000 - 10462 144 Street, Edmonton

MLS® #E4443127

\$672,000

4 Bedroom, 3.50 Bathroom, 1,764 sqft

Single Family on 0.00 Acres

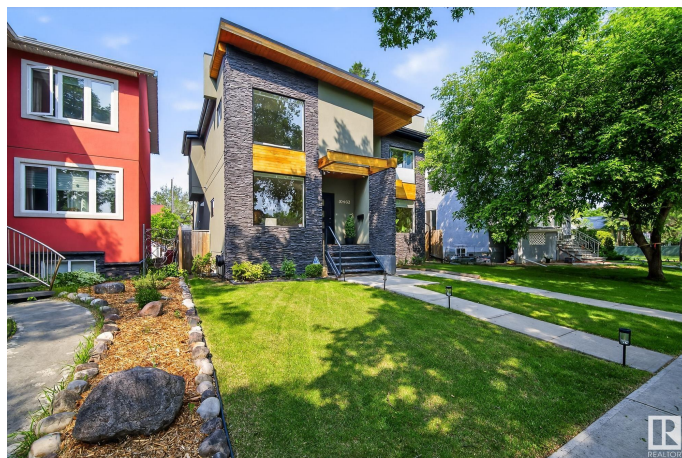
Grovenor, Edmonton, AB

This half duplex is tucked along a quiet, tree-lined street and features tall ceilings, an open-concept layout, and a cozy living room that opens onto the backyard. The Pinterest-ready galley kitchen boasts stainless steel appliances, a gas range, and a built-in microwave-oven. A corner gas fireplace provides a stylish and functional separation between the kitchen and living room. Upstairs, you'll find three bedrooms, including a spacious primary suite with a five-piece ensuite. The fully finished basement offers a private master suite with its own jetted tub, plus a bonus room—perfect for a home office, gym, or media space. Outside, the yard is fully fenced and landscaped, with a detached garage to keep your car out of the snow. Built using advanced SIPS (Structural Insulated Panels) technology, this home offers superior energy efficiency and durability.

Built in 2013

Essential Information

| | |
|------------|-----------|
| MLS® # | E4443127 |
| Price | \$672,000 |
| Bedrooms | 4 |
| Bathrooms | 3.50 |
| Full Baths | 3 |
| Half Baths | 1 |



| | |
|----------------|---------------|
| Square Footage | 1,764 |
| Acres | 0.00 |
| Year Built | 2013 |
| Type | Single Family |
| Sub-Type | Half Duplex |
| Style | 2 Storey |
| Status | Active |

Community Information

| | |
|-------------|------------------|
| Address | 10462 144 Street |
| Area | Edmonton |
| Subdivision | Grovenor |
| City | Edmonton |
| County | ALBERTA |
| Province | AB |
| Postal Code | T5N 2V4 |

Amenities

| | |
|-----------|--|
| Amenities | Deck, Detectors Smoke, Infill Property |
| Parking | Double Garage Detached |

Interior

| | |
|-------------------|---|
| Interior Features | ensuite bathroom |
| Appliances | Air Conditioning-Central, Dishwasher-Built-In, Dryer, Hood Fan, Oven-Microwave, Refrigerator, Stove-Gas, Washer |
| Heating | Forced Air-1, Natural Gas |
| Fireplace | Yes |
| Fireplaces | Corner |
| Stories | 3 |
| Has Basement | Yes |
| Basement | Full, Finished |

Exterior

| | |
|-------------------|----------------------|
| Exterior | Steel, Stone, Stucco |
| Exterior Features | Landscaped |
| Roof | Asphalt Shingles |
| Construction | Steel, Stone, Stucco |
| Foundation | Concrete Perimeter |

School Information

| | |
|------------|----------------------|
| Elementary | Grovenor School |
| Middle | Westminster School |
| High | Ross Sheppard School |

Additional Information

| | |
|-------------|-----------------|
| Date Listed | June 19th, 2025 |
|-------------|-----------------|

| | |
|----------------|----|
| Days on Market | 16 |
|----------------|----|

| | |
|--------|---------|
| Zoning | Zone 21 |
|--------|---------|

DATA IS DEEMED RELIABLE BUT IS NOT GUARANTEED ACCURATE BY THE REALTORS® ASSOCIATION OF EDMONTON. COPYRIGHT 2025 BY THE REALTORS® ASSOCIATION OF EDMONTON. ALL RIGHTS RESERVED. Trademarks are owned or controlled by the Canadian Real Estate Association (CREA) and identify real estate professionals who are members of CREA (REALTOR®, REALTORS®) and/or the quality of services they provide (MLS®, Multiple Listing Service®)

Listing information last updated on July 5th, 2025 at 5:17pm MDT