

## \$427,000 - 13422 166 Avenue, Edmonton

MLS® #E4444810

**\$427,000**

2 Bedroom, 2.50 Bathroom, 1,337 sqft

Single Family on 0.00 Acres

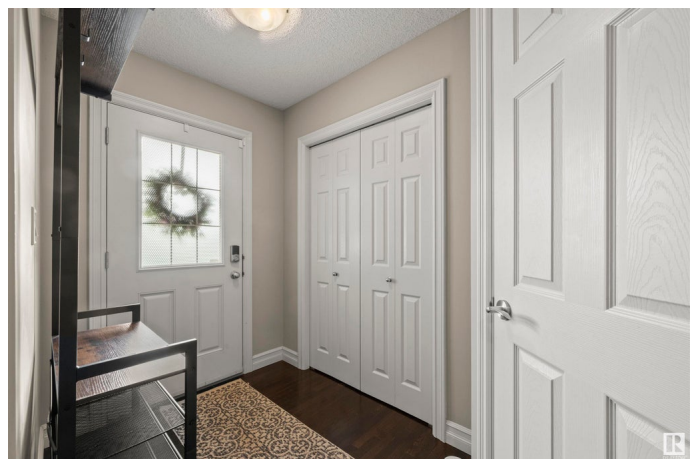
Carlton, Edmonton, AB

Half duplex with over 1,300 square feet with dual owner's suites upstairs! This home features hardwood flooring throughout the main floor, stainless steel appliances, corner pantry and great view of the large backyard backing. Upstairs features the dual owner's suites w/ walk-in closets and your conveniently appointed laundry. The basement has been fully finished as a large family room. Carlton is conveniently located with easy access to Anthony Henday, Albany shopping center with all the amenities!

Built in 2012

### Essential Information

MLS® #	E4444810
Price	\$427,000
Bedrooms	2
Bathrooms	2.50
Full Baths	2
Half Baths	1
Square Footage	1,337
Acres	0.00
Year Built	2012
Type	Single Family
Sub-Type	Half Duplex
Style	2 Storey
Status	Active



## Community Information

Address	13422 166 Avenue
Area	Edmonton
Subdivision	Carlton
City	Edmonton
County	ALBERTA
Province	AB
Postal Code	T6V 0G6

## Amenities

Amenities	Detectors Smoke, Hot Water Tankless, No Smoking Home
Parking	Single Garage Attached

## Interior

Interior Features	ensuite bathroom
Appliances	Dishwasher - Energy Star, Dryer, Microwave Hood Fan, Refrigerator, Stove-Electric, Washer, Window Coverings
Heating	Forced Air-1, Natural Gas
Stories	3
Has Basement	Yes
Basement	Full, Finished

## Exterior

Exterior	Wood, Stone, Vinyl
Exterior Features	Commercial, Fenced, Landscaped, Public Transportation, Schools, Shopping Nearby
Roof	Asphalt Shingles
Construction	Wood, Stone, Vinyl
Foundation	Concrete Perimeter

## School Information

Elementary	Elizabeth Finch School
Middle	Elizabeth Finch School
High	Ross Sheppard School

## Additional Information

Date Listed	June 27th, 2025
Days on Market	7
Zoning	Zone 27

DATA IS DEEMED RELIABLE BUT IS NOT GUARANTEED ACCURATE BY THE REALTORS® ASSOCIATION OF EDMONTON. COPYRIGHT 2025 BY THE REALTORS® ASSOCIATION OF EDMONTON. ALL RIGHTS RESERVED.Trademarks are owned or controlled by the Canadian Real Estate Association (CREA) and identify real estate professionals who are members of CREA (REALTOR®, REALTORS®) and/or the quality of services they provide (MLS®, Multiple Listing Service®)

Listing information last updated on July 4th, 2025 at 6:02pm MDT