

\$415,000 - 4218 Terwillegar Vista Vista, Edmonton

MLS® #E4445188

\$415,000

4 Bedroom, 2.50 Bathroom, 1,335 sqft

Single Family on 0.00 Acres

Terwillegar Towne, Edmonton, AB

Welcome to this beautifully maintained 4 bedroom, 2 and a half bathroom end unit two storey home offering space, style, and functionality in a fantastic family friendly location. The main floor features durable laminate flooring throughout, a spacious dine in kitchen with stainless steel appliances, a pantry, and plenty of counter space. A rear mudroom with a newer washer and dryer adds convenience and leads to a west facing backyard with sunset views, a large deck with a gazebo, and a heated double detached garage. Upstairs you will find three generous bedrooms including a bright and airy primary bedroom with its own ensuite. The main bathroom includes a relaxing jacuzzi tub. The fully finished basement provides even more living space with a comfortable family room, a fourth bedroom, and a full bathroom. Located just steps from parks, schools, and public transportation, this home offers excellent value with no condo fees. A wonderful opportunity for families or investors.

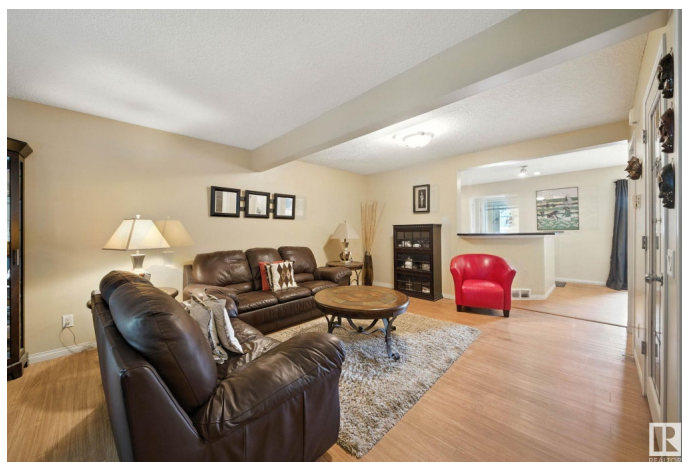
Built in 2001

Essential Information

MLS® # E4445188

Price \$415,000

Bedrooms 4



Bathrooms	2.50
Full Baths	2
Half Baths	1
Square Footage	1,335
Acres	0.00
Year Built	2001
Type	Single Family
Sub-Type	Residential Attached
Style	2 Storey
Status	Active

Community Information

Address	4218 Terwillegar Vista Vista
Area	Edmonton
Subdivision	Terwillegar Towne
City	Edmonton
County	ALBERTA
Province	AB
Postal Code	T6R 3E2

Amenities

Amenities	Deck, Detectors Smoke, Exterior Walls- 2"x6", Front Porch, No Animal Home, No Smoking Home, Vinyl Windows, Natural Gas BBQ Hookup
Parking Spaces	4
Parking	Double Garage Detached, Heated

Interior

Interior Features	ensuite bathroom
Appliances	Dishwasher-Built-In, Dryer, Garage Control, Garage Opener, Hood Fan, Refrigerator, Stove-Electric, Washer, Window Coverings, Garage Heater
Heating	Forced Air-1, Natural Gas
Stories	3
Has Basement	Yes
Basement	Full, Finished

Exterior

Exterior	Wood, Brick, Vinyl
Exterior Features	Back Lane, Fenced, Flat Site, Landscaped, Playground Nearby, Public Transportation, Schools, Shopping Nearby

Roof	Asphalt Shingles
Construction	Wood, Brick, Vinyl
Foundation	Concrete Perimeter

School Information

Elementary	Esther Starkman
Middle	Esther Starkman
High	Lilian Osborne

Additional Information

Date Listed	July 1st, 2025
Days on Market	3
Zoning	Zone 14
HOA Fees	138
HOA Fees Freq.	Annually

DATA IS DEEMED RELIABLE BUT IS NOT GUARANTEED ACCURATE BY THE REALTORS® ASSOCIATION OF EDMONTON. COPYRIGHT 2025 BY THE REALTORS® ASSOCIATION OF EDMONTON. ALL RIGHTS RESERVED. Trademarks are owned or controlled by the Canadian Real Estate Association (CREA) and identify real estate professionals who are members of CREA (REALTOR®, REALTORS®) and/or the quality of services they provide (MLS®, Multiple Listing Service®)

Listing information last updated on July 4th, 2025 at 3:17am MDT