

\$299,999 - 10448 142 Street, Edmonton

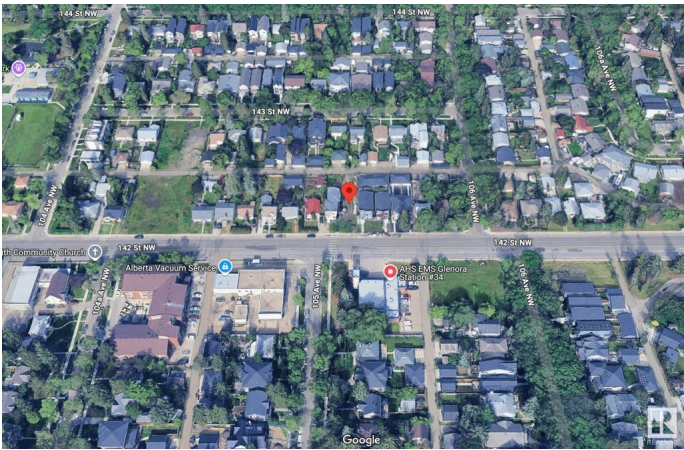
MLS® #E4445425

\$299,999

0 Bedroom, 0.00 Bathroom,
Single Family on 0.00 Acres

Grovenor, Edmonton, AB

Great Development opportunity to build in the highly desirable community of Grovenor. This vacant 31.5 ft x 143 ft RS-zoned lot is ideal for a stunning single-family home or potential infill project. The property includes rear lane access and upgraded services, making it development-ready.



Essential Information

MLS® #	E4445425
Price	\$299,999
Bathrooms	0.00
Acres	0.00
Type	Single Family
Sub-Type	Vacant Lot/Land
Status	Active

Community Information

Address	10448 142 Street
Area	Edmonton
Subdivision	Grovenor
City	Edmonton
County	ALBERTA
Province	AB
Postal Code	T5N 2P2

Exterior

Exterior Features Back Lane, Playground Nearby, Public Transportation, Shopping Nearby

Additional Information

Date Listed July 1st, 2025

Days on Market 51

Zoning Zone 21

DATA IS DEEMED RELIABLE BUT IS NOT GUARANTEED ACCURATE BY THE REALTORS® ASSOCIATION OF EDMONTON. COPYRIGHT 2025 BY THE REALTORS® ASSOCIATION OF EDMONTON. ALL RIGHTS RESERVED.Trademarks are owned or controlled by the Canadian Real Estate Association (CREA) and identify real estate professionals who are members of CREA (REALTOR®, REALTORS®) and/or the quality of services they provide (MLS®, Multiple Listing Service®)

Listing information last updated on August 21st, 2025 at 2:48pm MDT