

\$449,900 - 2077 Price Landing Landing, Edmonton

MLS® #E4445965

\$449,900

3 Bedroom, 2.50 Bathroom, 1,418 sqft

Single Family on 0.00 Acres

Paisley, Edmonton, AB

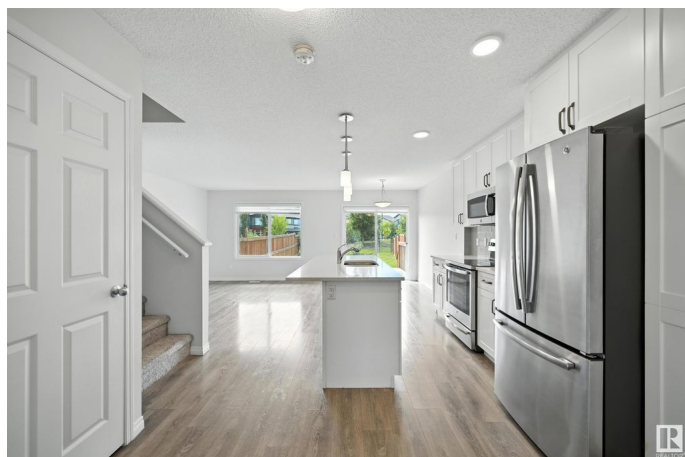
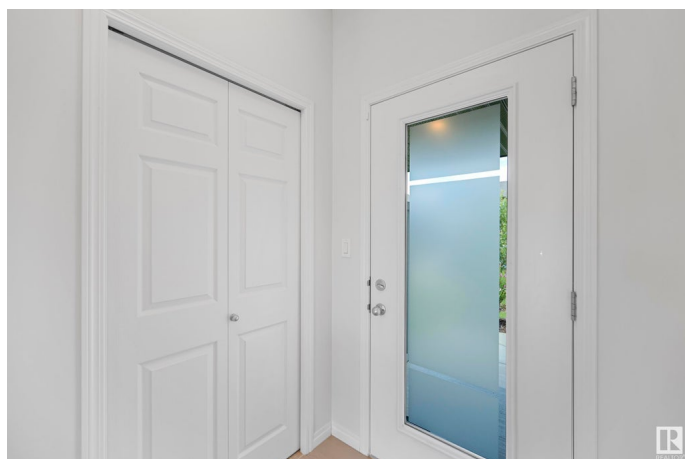
Welcome to Paisley, a vibrant southwest Edmonton community known for its beautiful walking trails, off-leash dog park, playgrounds, and quick access to shopping, schools, and major roadways. This charming 3-bedroom half duplex offers a bright and open concept layout, perfect for modern living. The main floor is flooded with natural light and features a stylish kitchen with a large island, quartz countertops, and plenty of cupboard space. The dining area and spacious living room flow seamlessly together, and a convenient 2-piece bath completes the level. Upstairs, the massive primary bedroom includes a walk-in closet and ensuite, while two additional bedrooms overlook the backyard and share a 4-piece bath. The upper floor laundry adds convenience. Enjoy your private backyard with a gas BBQ hookup, large deck, and direct access to the park behind. A single attached garage completes this move-in-ready home in one of Edmonton's most desirable newer communities. SOME PHOTOS ARE VIRTUALLY STAGED.

Built in 2017

Essential Information

MLS® # E4445965

Price \$449,900



Bedrooms	3
Bathrooms	2.50
Full Baths	2
Half Baths	1
Square Footage	1,418
Acres	0.00
Year Built	2017
Type	Single Family
Sub-Type	Half Duplex
Style	2 Storey
Status	Active

Community Information

Address	2077 Price Landing Landing
Area	Edmonton
Subdivision	Paisley
City	Edmonton
County	ALBERTA
Province	AB
Postal Code	T6W 3P8

Amenities

Amenities	Deck, Natural Gas BBQ Hookup
Parking Spaces	2
Parking	Single Garage Attached

Interior

Interior Features	ensuite bathroom
Appliances	Dishwasher-Built-In, Dryer, Microwave Hood Fan, Refrigerator, Stove-Electric, Washer, Window Coverings
Heating	Forced Air-1, Natural Gas
Stories	2
Has Basement	Yes
Basement	Full, Unfinished

Exterior

Exterior	Wood, Vinyl
Exterior Features	Backs Onto Park/Trees, Fenced, Golf Nearby, Landscaped, Playground Nearby, Public Transportation, Schools, Shopping Nearby

Roof	Asphalt Shingles
Construction	Wood, Vinyl
Foundation	Concrete Perimeter

School Information

Elementary	Steinhauer School
Middle	D.S. MacKenzie School
High	Dr. Anne Anderson School

Additional Information

Date Listed	July 4th, 2025
Days on Market	2
Zoning	Zone 55

DATA IS DEEMED RELIABLE BUT IS NOT GUARANTEED ACCURATE BY THE REALTORS® ASSOCIATION OF EDMONTON. COPYRIGHT 2025 BY THE REALTORS® ASSOCIATION OF EDMONTON. ALL RIGHTS RESERVED. Trademarks are owned or controlled by the Canadian Real Estate Association (CREA) and identify real estate professionals who are members of CREA (REALTOR®, REALTORS®) and/or the quality of services they provide (MLS®, Multiple Listing Service®)

Listing information last updated on July 6th, 2025 at 10:17am MDT