

\$670,000 - 2108 Trumpeter Way, Edmonton

MLS® #E4447159

\$670,000

4 Bedroom, 2.50 Bathroom, 2,286 sqft

Single Family on 0.00 Acres

Trumpeter Area, Edmonton, AB

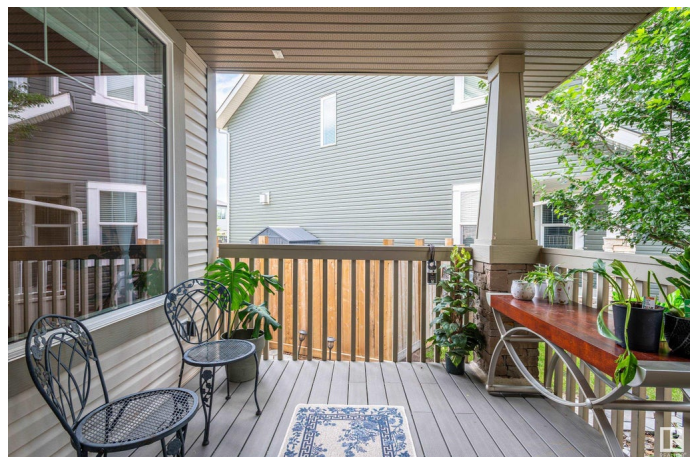
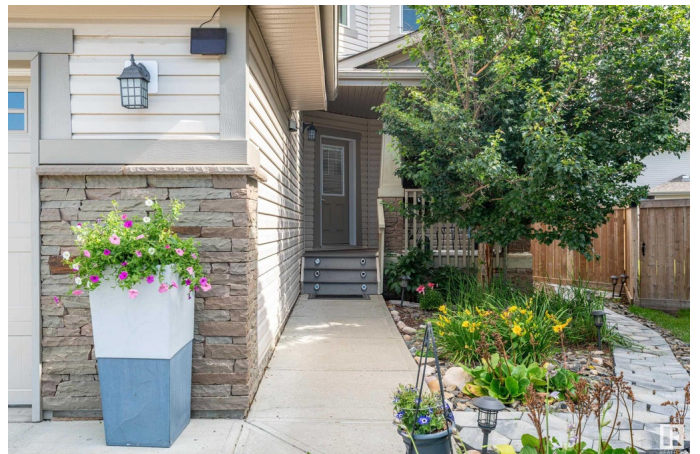
Welcome to your dream home in Trumpeter! This stunning former show home on a huge pie-shaped lot boasts 2285sqft of pure luxury. Step onto the expansive front porch w/ durable composite deckingâ€”perfect for relaxing or entertaining. Inside, discover 5 spacious bedrooms + a bonus room w/ soaring vaulted ceilings that wow at every turn. Host elegant dinners in the formal dining room or whip up culinary delights in the gourmet kitchen feat. textured glass cabinets & a chic two-tiered island w/ built-in wine rack. Gleaming hardwood flows through the main living area, centered around a cozy gas fireplace w/ modern feature wall. Need versatility? The flex room is an ideal office or guest retreat. Upstairs, the primary suite pampers you w/ a huge walk-in closet & a spa-like 5pc ensuite. Enjoy a finished basement w/ an extra bedroom, central AC, & a built-in Sonos Sound System. Outside, the beautifully landscaped backyard shines w/ an oversized triple-tiered deckâ€”your private oasis for summer fun. So much to love!

Built in 2012

Essential Information

MLS® # E4447159

Price \$670,000



Bedrooms	4
Bathrooms	2.50
Full Baths	2
Half Baths	1
Square Footage	2,286
Acres	0.00
Year Built	2012
Type	Single Family
Sub-Type	Detached Single Family
Style	2 Storey
Status	Active

Community Information

Address	2108 Trumpeter Way
Area	Edmonton
Subdivision	Trumpeter Area
City	Edmonton
County	ALBERTA
Province	AB
Postal Code	T5S 0G1

Amenities

Amenities	Air Conditioner, Closet Organizers, Deck, Detectors Smoke, Fire Pit, Front Porch, No Animal Home, No Smoking Home, Vaulted Ceiling, Vinyl Windows, Natural Gas BBQ Hookup
Parking	Double Garage Attached, Front Drive Access, Insulated

Interior

Interior Features	ensuite bathroom
Appliances	Air Conditioning-Central, Dishwasher-Built-In, Dryer, Freezer, Garage Control, Garage Opener, Microwave Hood Fan, Refrigerator, Stove-Electric, Washer, Window Coverings, TV Wall Mount
Heating	Forced Air-1, Natural Gas
Fireplace	Yes
Fireplaces	Mantel, Tile Surround
Stories	3
Has Basement	Yes
Basement	Full, Finished

Exterior

Exterior	Wood, Stone, Vinyl
Exterior Features	Cul-De-Sac, Environmental Reserve, Fenced, Flat Site, Golf Nearby, Landscaped, Level Land, No Back Lane, Picnic Area, Playground Nearby, Public Transportation, Schools
Roof	Asphalt Shingles
Construction	Wood, Stone, Vinyl
Foundation	Concrete Perimeter

Additional Information

Date Listed	July 11th, 2025
Zoning	Zone 59

DATA IS DEEMED RELIABLE BUT IS NOT GUARANTEED ACCURATE BY THE REALTORS® ASSOCIATION OF EDMONTON. COPYRIGHT 2025 BY THE REALTORS® ASSOCIATION OF EDMONTON. ALL RIGHTS RESERVED.Trademarks are owned or controlled by the Canadian Real Estate Association (CREA) and identify real estate professionals who are members of CREA (REALTOR®, REALTORS®) and/or the quality of services they provide (MLS®, Multiple Listing Service®)

Listing information last updated on July 11th, 2025 at 7:17pm MDT