

## \$360,000 - 3221 138 Avenue, Edmonton

MLS® #E4450551

**\$360,000**

4 Bedroom, 1.50 Bathroom, 1,112 sqft

Single Family on 0.00 Acres

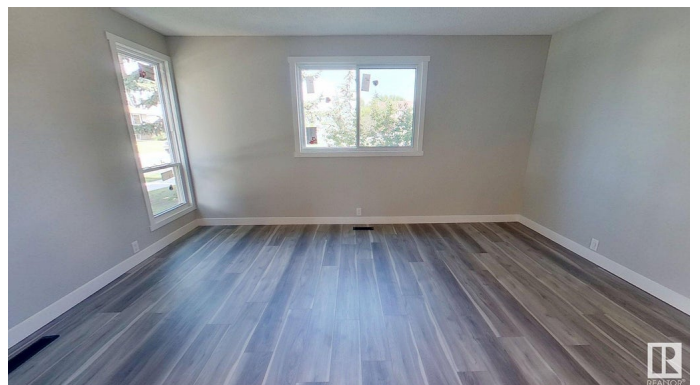
Hairsine, Edmonton, AB

Beautifully updated 1,112 sq ft half duplex with modern finishes throughout! No condo fees with this 4-bedroom, 2-bath home features a fully renovated kitchen with upgraded quartz countertops and new appliances, complemented by fresh paint, new vinyl plank flooring throughout, new windows, new baseboards, new light fixtures, new upgraded vanities with quartz countertops, and new toilets. The upper level offers 3 spacious bedrooms, while the fully finished basement includes a 4th bedroom, den, and laundry room with new washer and dryer – perfect for extra living space. Enjoy the convenience of a large double detached garage. Ideally located close to schools, transit, shopping, and the Henday.

Built in 1980

### Essential Information

MLS® #	E4450551
Price	\$360,000
Bedrooms	4
Bathrooms	1.50
Full Baths	1
Half Baths	1
Square Footage	1,112
Acres	0.00



Year Built	1980
Type	Single Family
Sub-Type	Half Duplex
Style	2 Storey
Status	Active

### **Community Information**

Address	3221 138 Avenue
Area	Edmonton
Subdivision	Hairsine
City	Edmonton
County	ALBERTA
Province	AB
Postal Code	T5Y 1P2

### **Amenities**

Amenities	Detectors Smoke, Vinyl Windows
Parking	Double Garage Detached, Front Drive Access

### **Interior**

Appliances	Dishwasher-Built-In, Dryer, Garage Opener, Hood Fan, Refrigerator, Stove-Electric, Washer
Heating	Forced Air-1, Natural Gas
Stories	3
Has Basement	Yes
Basement	Full, Finished

### **Exterior**

Exterior	Wood, Vinyl
Exterior Features	Corner Lot, Cul-De-Sac, Playground Nearby, Public Transportation, Schools, Shopping Nearby
Roof	Asphalt Shingles
Construction	Wood, Vinyl
Foundation	Concrete Perimeter

### **Additional Information**

Date Listed	July 31st, 2025
Days on Market	2
Zoning	Zone 35

DATA IS DEEMED RELIABLE BUT IS NOT GUARANTEED ACCURATE BY THE REALTORS® ASSOCIATION OF EDMONTON. COPYRIGHT 2025 BY THE REALTORS® ASSOCIATION OF EDMONTON. ALL RIGHTS RESERVED.Trademarks are owned or controlled by the Canadian Real Estate Association (CREA) and identify real estate professionals who are members of CREA (REALTOR®, REALTORS®) and/or the quality of services they provide (MLS®, Multiple Listing Service®)

Listing information last updated on August 2nd, 2025 at 7:32am MDT