

## \$129,900 - 306 10160 83 Avenue, Edmonton

MLS® #E4454860

**\$129,900**

1 Bedroom, 1.00 Bathroom, 484 sqft

Condo / Townhouse on 0.00 Acres

Strathcona, Edmonton, AB

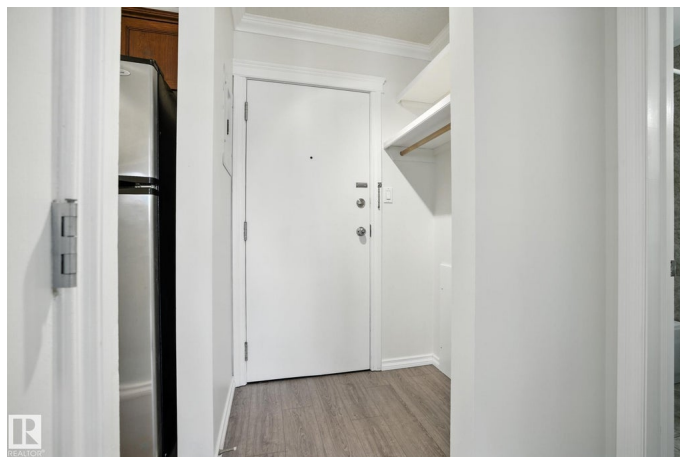
Have you been looking for a GREAT VALUE property that is perfect for university STUDENTS, young PROFESSIONALS looking to be close to downtown, or savvy INVESTORS looking for cashflow? Welcome to this lovely TOP FLOOR condo in the heart of Strathcona! Situated in a quiet low-rise, this move in ready home offers a practical design with a spacious living room, dining area, beautiful kitchen with granite counter tops, one bedroom, and a 4-piece bath. Updates throughout give it a modern feel, so you can simply move in and enjoy! Your single covered parking stall adds convenience and there's plenty of street parking for guests. Located just steps from bustling Whyte Avenue, the Strathcona Farmers Market, tons of trendy shops, cozy coffee shops, amazing restaurants, and the University of Alberta, youâ€™ll love the lifestyle this community offers! This condo is a fantastic opportunity in one of Edmontonâ€™s most vibrant neighbourhoods! WELCOME HOME!!! (Some photos virtually staged)

Built in 1968

### Essential Information

MLS® # E4454860

Price \$129,900



Bedrooms	1
Bathrooms	1.00
Full Baths	1
Square Footage	484
Acres	0.00
Year Built	1968
Type	Condo / Townhouse
Sub-Type	Lowrise Apartment
Style	Single Level Apartment
Status	Active

### Community Information

Address	306 10160 83 Avenue
Area	Edmonton
Subdivision	Strathcona
City	Edmonton
County	ALBERTA
Province	AB
Postal Code	T6E 2C4

### Amenities

Amenities	On Street Parking, Patio
Parking Spaces	1
Parking	Stall

### Interior

Appliances	Dishwasher-Built-In, Dryer, Microwave Hood Fan, Refrigerator, Stove-Electric, Washer
Heating	Baseboard, Natural Gas
# of Stories	3
Stories	1
Has Basement	Yes
Basement	None, No Basement

### Exterior

Exterior	Wood, Brick, Stucco
Exterior Features	Playground Nearby, Public Transportation, Shopping Nearby
Roof	Tar & Gravel
Construction	Wood, Brick, Stucco

Foundation                      Concrete Perimeter

**Additional Information**

Date Listed                      August 27th, 2025  
Days on Market                1  
Zoning                              Zone 15  
Condo Fee                        \$412

DATA IS DEEMED RELIABLE BUT IS NOT GUARANTEED ACCURATE BY THE REALTORS® ASSOCIATION OF EDMONTON. COPYRIGHT 2025 BY THE REALTORS® ASSOCIATION OF EDMONTON. ALL RIGHTS RESERVED.Trademarks are owned or controlled by the Canadian Real Estate Association (CREA) and identify real estate professionals who are members of CREA (REALTOR®, REALTORS®) and/or the quality of services they provide (MLS®, Multiple Listing Service®)  
Listing information last updated on August 28th, 2025 at 6:32am MDT