

\$449,000 - 18331 68 Avenue, Edmonton

MLS® #E4458202

\$449,000

4 Bedroom, 3.00 Bathroom, 1,238 sqft
Single Family on 0.00 Acres

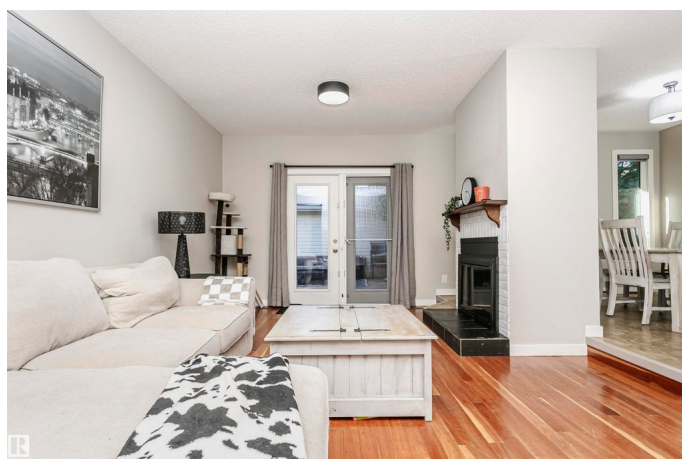
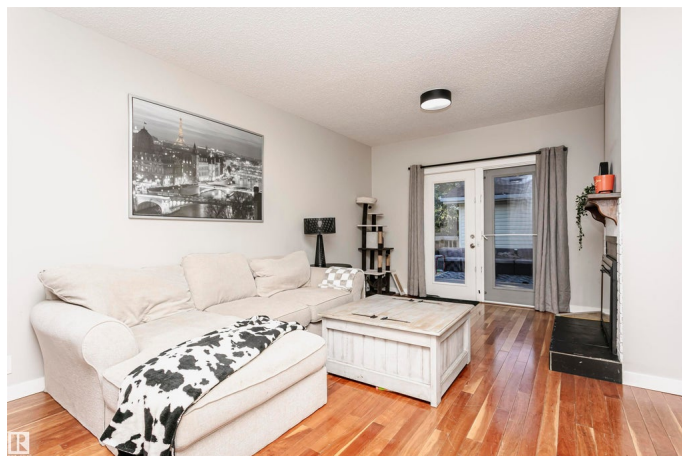
Ormsby Place, Edmonton, AB

Beautiful Bungalow in sought-after Ormsby Place offering around 2400 sq ft of updated living space, including both levels. Recent updates include new shingles (2021), vinyl windows, modern lighting, plus a new fence and deck. The galley kitchen features under-cabinet lighting, pot drawers, pantry and a bright breakfast nook, opening to a dining area and sunken living room with hardwood floors, a wood-burning fireplace and garden doors to a sunny south-facing backyard. The private primary suite boasts his-and-hers closets and a 3-piece ensuite with stand-up shower, while the additional 2 bedrooms are a good size they also share a fully renovated 4-piece bath. The finished basement adds another bedroom & flex space along with a 3-piece bath, a spacious family room, and a laundry area. The double garage includes a new door opener from 2024. Underground sprinkler system installed as well.

Built in 1978

Essential Information

MLS® #	E4458202
Price	\$449,000
Bedrooms	4
Bathrooms	3.00
Full Baths	3



Square Footage	1,238
Acres	0.00
Year Built	1978
Type	Single Family
Sub-Type	Detached Single Family
Style	Bungalow
Status	Active

Community Information

Address	18331 68 Avenue
Area	Edmonton
Subdivision	Ormsby Place
City	Edmonton
County	ALBERTA
Province	AB
Postal Code	T5T 2H5

Amenities

Amenities	Air Conditioner, Detectors Smoke, Vinyl Windows, Vacuum System-Roughed-In
Parking Spaces	4
Parking	Double Garage Detached

Interior

Interior Features	ensuite bathroom
Appliances	Air Conditioning-Central, Dishwasher-Built-In, Dryer, Garage Control, Garage Opener, Refrigerator, Stove-Electric, Washer, Window Coverings
Heating	Forced Air-1, Natural Gas
Stories	2
Has Basement	Yes
Basement	Full, Finished

Exterior

Exterior	Wood, Vinyl
Exterior Features	Landscaped, Low Maintenance Landscape, Playground Nearby, Public Transportation, Schools, Shopping Nearby
Roof	Asphalt Shingles
Construction	Wood, Vinyl

Foundation Concrete Perimeter

Additional Information

Date Listed September 17th, 2025

Days on Market 1

Zoning Zone 20

DATA IS DEEMED RELIABLE BUT IS NOT GUARANTEED ACCURATE BY THE REALTORS® ASSOCIATION OF EDMONTON. COPYRIGHT 2025 BY THE REALTORS® ASSOCIATION OF EDMONTON. ALL RIGHTS RESERVED. Trademarks are owned or controlled by the Canadian Real Estate Association (CREA) and identify real estate professionals who are members of CREA (REALTOR®, REALTORS®) and/or the quality of services they provide (MLS®, Multiple Listing Service®)

Listing information last updated on September 17th, 2025 at 11:17pm MDT