

\$339,900 - 45 3710 Allan Drive, Edmonton

MLS® #E4463869

\$339,900

2 Bedroom, 2.50 Bathroom, 1,530 sqft
Condo / Townhouse on 0.00 Acres

Ambleside, Edmonton, AB

Modern end unit townhome at Eve in Ambleside, this 1529 sqft home features 9' ceilings on 3 levels, a huge 8' x 14' balcony w/ a natural gas hookup for the BBQ. The lower entry level features a flex room adjacent to the front entry, a large front entry closet, laundry with front load washer & dryer, and access to the oversized 23'x13' insulated & heated garage - room to fit a full size truck!. The main floor features hardwood flooring throughout, a bright & spacious living room, 2-piece bathroom, and a large kitchen which has beautiful granite countertops, an eating bar and a large amount of extra cabinet space. Enjoy the sunlight with the additional end-unit windows throughout. The upper level opens up into two primary bedrooms, w, a 3-piece and a 4-piece ensuite, and double closets in each bedroom. Brand new carpets and the home has been professionally painted throughout. Includes an additional titled surface parking stall. Walking distance to transit, schools & shopping. Move-in ready!

Built in 2013

Essential Information

| | |
|----------|-----------|
| MLS® # | E4463869 |
| Price | \$339,900 |
| Bedrooms | 2 |



Bathrooms 2.50
 Full Baths 2
 Half Baths 1
 Square Footage 1,530
 Acres 0.00
 Year Built 2013
 Type Condo / Townhouse
 Sub-Type Townhouse
 Style 3 Storey
 Status Active

Community Information

Address 45 3710 Allan Drive
 Area Edmonton
 Subdivision Ambleside
 City Edmonton
 County ALBERTA
 Province AB
 Postal Code T6W 2C4

Amenities

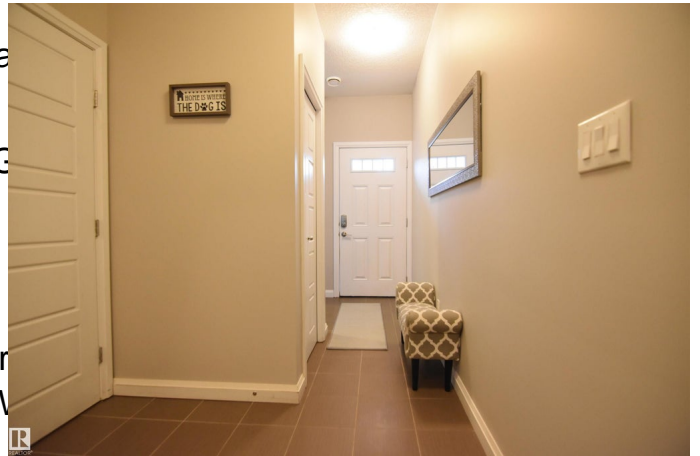
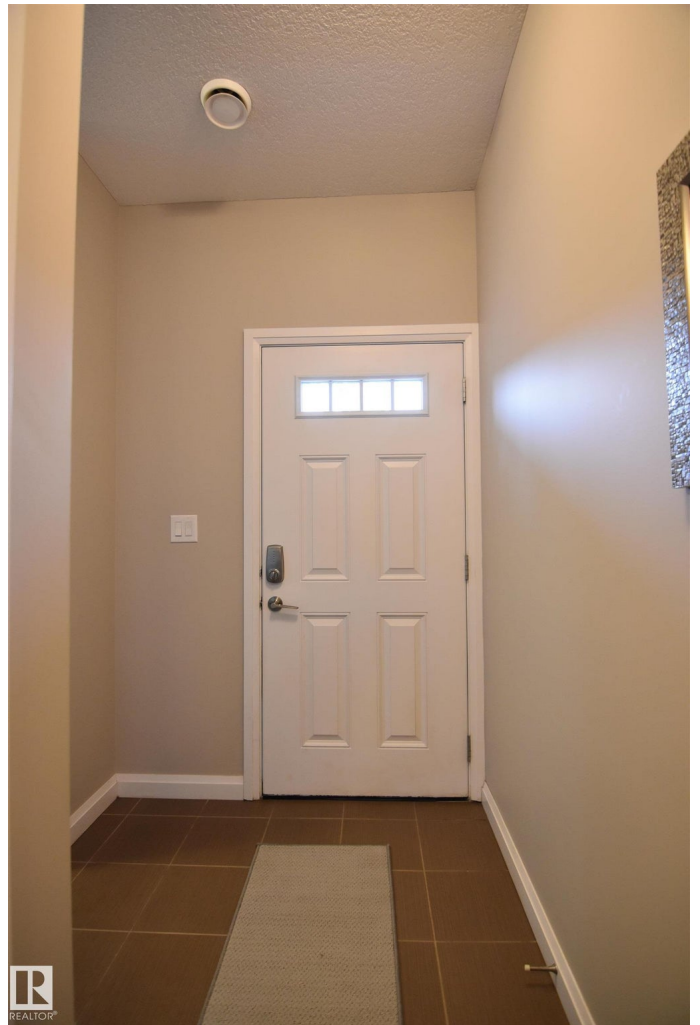
Amenities Deck, No Smoking Home, Pa
 Parking Spaces 2
 Parking Heated, Over Sized, Single C

Interior

Interior Features ensuite bathroom
 Appliances Dishwasher-Built-In, Dryer
 Refrigerator, Stove-Electric, V
 Heating Forced Air-1, Natural Gas
 Stories 3
 Has Basement Yes
 Basement Full, Finished

Exterior

Exterior Wood, Stone, Vinyl
 Exterior Features Playground Nearby, Public Transportation, Schools, Shopping Nearby
 Roof Asphalt Shingles
 Construction Wood, Stone, Vinyl



Foundation Concrete Perimeter

Additional Information

Date Listed October 29th, 2025

Days on Market 7

Zoning Zone 56

Condo Fee \$277

DATA IS DEEMED RELIABLE BUT IS NOT GUARANTEED ACCURATE BY THE REALTORS® ASSOCIATION OF EDMONTON. COPYRIGHT 2025 BY THE REALTORS® ASSOCIATION OF EDMONTON. ALL RIGHTS RESERVED. Trademarks are owned or controlled by the Canadian Real Estate Association (CREA) and identify real estate professionals who are members of CREA (REALTOR®, REALTORS®) and/or the quality of services they provide (MLS®, Multiple Listing Service®)

Listing information last updated on November 5th, 2025 at 11:02am MST