

Courtesy Of Jesse Hiew Of Exp Realty

\$380,000 - 12253 167a Avenue, Edmonton

MLS® #E4464005

\$380,000

3 Bedroom, 2.50 Bathroom, 1,400 sqft

Single Family on 0.00 Acres

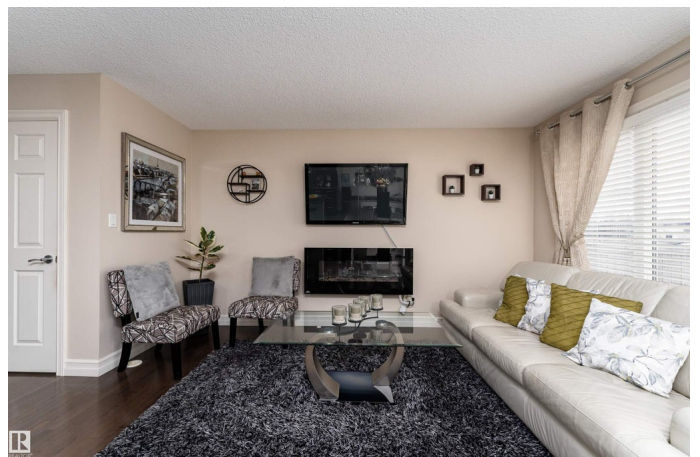
Rapperswill, Edmonton, AB

Discover the perfect blend of comfort and style in this 1,400 sq ft home in the community of Rapperswill. Step inside to a bright main floor with dark hardwood floors, large windows, and a cozy wall-mounted electric fireplace. The kitchen features dark cabinets and countertops that contrast beautifully with light walls, a large island with a sink, and a dining area with sliding doors leading to the backyard deck and fenced yard, perfect for family gatherings. A 2-piece bathroom and access to the single attached garage complete the main level. Upstairs offers 3 spacious bedrooms, including a primary suite with a walk-in closet and 3-piece ensuite, plus a 4-piece bathroom and convenient laundry. The unfinished basement provides space for a rec room, gym, or extra living area. Outside, enjoy the front porch and spacious backyard. Close to Rapperswill Castle Playground, Castle Downs YMCA, Cattail Crossing Golf Course, and shopping, this home offers comfort, convenience, and an ideal family lifestyle.

Built in 2012

Essential Information

MLS® #	E4464005
Price	\$380,000
Bedrooms	3



Bathrooms	2.50
Full Baths	2
Half Baths	1
Square Footage	1,400
Acres	0.00
Year Built	2012
Type	Single Family
Sub-Type	Residential Attached
Style	2 Storey
Status	Active

Community Information

Address	12253 167a Avenue
Area	Edmonton
Subdivision	Rapperswill
City	Edmonton
County	ALBERTA
Province	AB
Postal Code	T5X 0G3

Amenities

Amenities	Carbon Monoxide Detectors, Deck, Detectors Smoke, Front Porch, No Animal Home, No Smoking Home
Parking	Single Garage Attached

Interior

Interior Features	ensuite bathroom
Appliances	Dishwasher-Built-In, Dryer, Garage Control, Garage Opener, Oven-Microwave, Refrigerator, Storage Shed, Stove-Electric, Washer, Curtains and Blinds
Heating	Forced Air-1, Natural Gas
Fireplace	Yes
Fireplaces	Wall Mount
Stories	2
Has Basement	Yes
Basement	Full, Unfinished

Exterior

Exterior	Wood, Vinyl
----------	-------------

Exterior Features	Fenced, Golf Nearby, Picnic Area, Playground Nearby, Schools, Shopping Nearby
Roof	Asphalt Shingles
Construction	Wood, Vinyl
Foundation	Concrete Perimeter

School Information

Elementary	Dunluce School
Middle	Mary Butterworth Jr. High
High	Paul Kane High School

Additional Information

Date Listed	October 30th, 2025
Days on Market	6
Zoning	Zone 27

DATA IS DEEMED RELIABLE BUT IS NOT GUARANTEED ACCURATE BY THE REALTORS® ASSOCIATION OF EDMONTON. COPYRIGHT 2025 BY THE REALTORS® ASSOCIATION OF EDMONTON. ALL RIGHTS RESERVED. Trademarks are owned or controlled by the Canadian Real Estate Association (CREA) and identify real estate professionals who are members of CREA (REALTOR®, REALTORS®) and/or the quality of services they provide (MLS®, Multiple Listing Service®)

Listing information last updated on November 5th, 2025 at 6:47am MST