

Courtesy Of Mina D Gayed Of Mozaic Realty Group

\$464,900 - 8409 24 Avenue, Edmonton

MLS® #E4464010

\$464,900

3 Bedroom, 2.50 Bathroom, 1,765 sqft
Single Family on 0.00 Acres

Summerside, Edmonton, AB

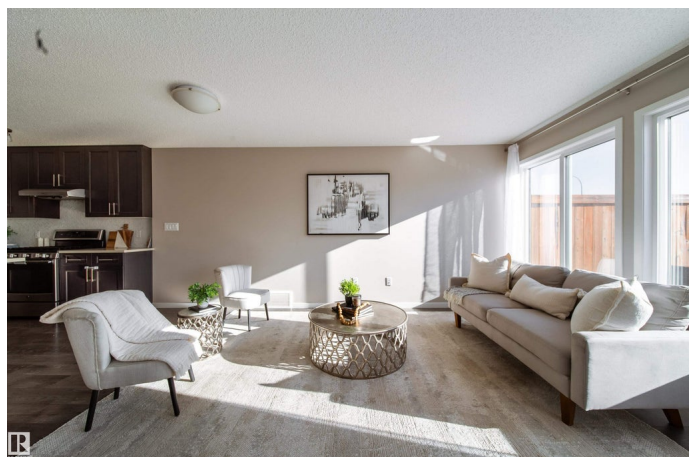
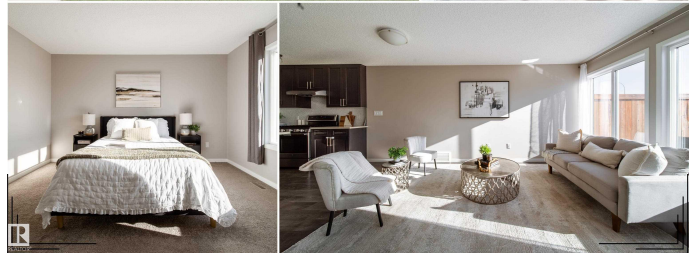
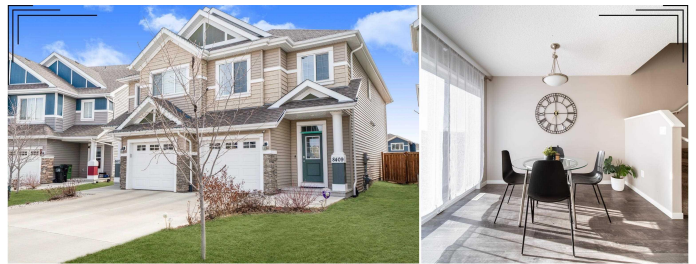
Live the Summerside lifestyle with private lake access in this stunning, sun-filled 2-storey home backing onto a private setting with no rear neighbours! This upgraded spacious 3-bed, 2.5-bath home offers 1,765 sq.ft. of beautifully designed living space. The open main floor boasts a bright great room, a chef's kitchen with upgraded maple cabinetry, gas stove, upgraded S/S appliances & stylish hood fan. The dining area opens to a full-width deck & fenced south-facing yard—perfect for relaxing or entertaining. Upstairs features a serene primary suite with double French doors, large WIC & ensuite. A versatile bonus room, convenient laundry room, full bath & 2 additional bedrooms. Additional highlights include an attached garage with an extended driveway & future potential for side entry. Walking distance to school, park & exclusive Lake Summerside access with private beach - year-round recreation—swimming, golf, fishing, boating, tennis & more. A bright, stylish & move-in-ready home with exceptional value!

Built in 2017

Essential Information

MLS® # E4464010

Price \$464,900



Bedrooms	3
Bathrooms	2.50
Full Baths	2
Half Baths	1
Square Footage	1,765
Acres	0.00
Year Built	2017
Type	Single Family
Sub-Type	Half Duplex
Style	2 Storey
Status	Active

Community Information

Address	8409 24 Avenue
Area	Edmonton
Subdivision	Summerside
City	Edmonton
County	ALBERTA
Province	AB
Postal Code	T6X 2G1

Amenities

Amenities	Club House, Deck, Hot Water Electric, Lake Privileges, Smart/Program. Thermostat, Racquet Courts, Recreation Room/Centre, Social Rooms, Tennis Courts
Parking Spaces	2
Parking	Single Garage Attached

Interior

Interior Features	ensuite bathroom
Appliances	Dishwasher-Built-In, Dryer, Garage Control, Garage Opener, Hood Fan, Refrigerator, Stove-Electric, Washer
Heating	Forced Air-1, Natural Gas
Stories	2
Has Basement	Yes
Basement	Full, Unfinished

Exterior

Exterior	Wood, Vinyl
----------	-------------

Exterior Features	Airport Nearby, Fenced, Lake Access Property, Landscaped, Playground Nearby, Private Fishing, Public Transportation, Schools, Shopping Nearby, Private Park Access
Roof	Asphalt Shingles
Construction	Wood, Vinyl
Foundation	Concrete Perimeter

School Information

Elementary	Michael Strembitsky
Middle	Michael Strembitsky
High	J. Percy Page School

Additional Information

Date Listed	October 30th, 2025
Days on Market	2
Zoning	Zone 53
HOA Fees	453.02
HOA Fees Freq.	Annually

DATA IS DEEMED RELIABLE BUT IS NOT GUARANTEED ACCURATE BY THE REALTORS® ASSOCIATION OF EDMONTON. COPYRIGHT 2025 BY THE REALTORS® ASSOCIATION OF EDMONTON. ALL RIGHTS RESERVED. Trademarks are owned or controlled by the Canadian Real Estate Association (CREA) and identify real estate professionals who are members of CREA (REALTOR®, REALTORS®) and/or the quality of services they provide (MLS®, Multiple Listing Service®)

Listing information last updated on October 31st, 2025 at 10:17pm MDT